

FOR MORE DETAILED INFORMATION,  
VISIT OUR WEBSITE  
**WWW.IBBT.BE**

**CONTACT**

Birgit.Morlion@ibbt.be  
Nico.Verplancke@ibbt.be

**Do you an innovative idea?**

Contact Birgit Morlion or Nico Verplancke.  
They will get you in touch with the right people from  
the IBBT research community and with potential  
partner organizations (companies, social profit  
organizations or governments).

connect.innovate.create

IBBT vzw  
Gaston Crommenlaan 8/102  
9050 Ghent, Belgium  
T + 32 9 331 48 00  
F + 32 9 331 48 05  
www.ibbt.be  
info@ibbt.be



**ICON**  
**IDEAS FOR DEMAND-DRIVEN  
RESEARCH**

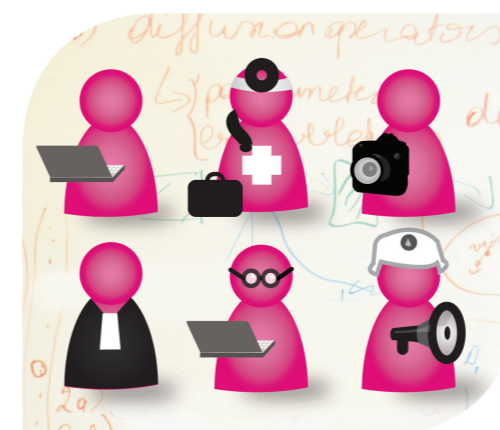




**The starting point of an ICON project is an ICT-related need detected by companies, governments or organizations and is typically situated in IBBT's five application domains: Culture & Media, Healthy Society, Green ICT, Sustainable Mobility and Social & Secure ICT.**

In cooperation with the university research departments, IBBT helps you to deal with this question and to find the right partners.

## Cooperative and interdisciplinary research



The research partners can be of all kind. **SME's, large companies, local branches of multinationals** as well as **governments** and **social profit organizations** can participate. A well-balanced consortium in which the consumer is involved as well is a prior condition for the success of the solution. In ICON projects not only the technological aspects are important, also the legal and social aspects are being studied. The final result of the two-year project is a demonstrator.

## Financing

**IBBT finances up to 50%** of all research costs, which means that IBBT bears the costs of the research departments. Each partner finances its own research but can however turn to **IWT** (<http://www.iwt.be/english/welcome>) for additional financial support. The conditions can be found on [www.iwt.be](http://www.iwt.be). One of the conditions is that the outcome of the project has to be achievable in Flanders (though not exclusively). The ICON procedure is brought into line with the IWT O&O business project procedure. By means of one **single application procedure** with the IBBT, all partners complying with the IWT conditions will be able to apply directly for IWT support for the ICON project.

## Property rights

Each partner has the **ownership of its own background input**. The foreground input is owned by the executive partner. By common accord co-ownership is possible as well.